

Fingering Chart

White

3

Low
D



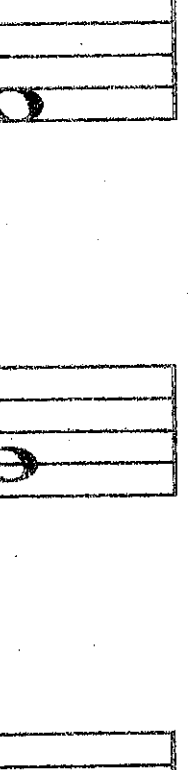
B



Low
E



C



F#



High
D



G



High
E



A



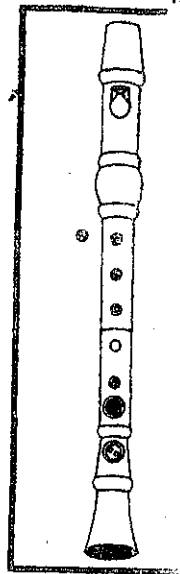
High
F



All F's in each measure are played as F#s!

Using the New Note F#

Concentrate while playing this exercise. It is very difficult to change from F# to E quickly.



measures with
ups as into
Track
92

When the Saints Go Marching In

(in the key of D)

measures with
ups as into
Track
92

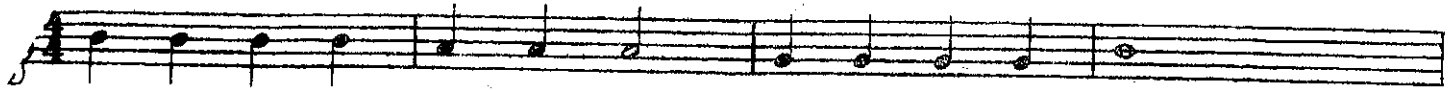
The Wedding March

R. Wagner

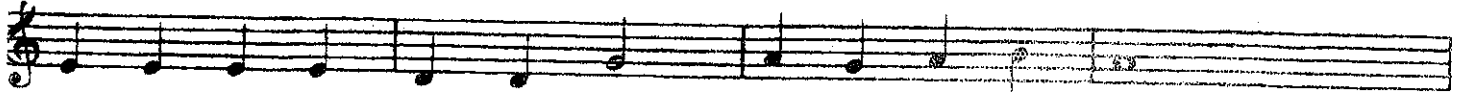
See page 39 (Holiday Express) for the song "Good King Wenceslas," which uses F#.

Jolly Old St. Nicholas

White Bear



Jol - ly, old St. Nich - o - las, lean your ear this way.



Don't you tell a sin - gle soul, what I'm going to say.



Christ - mas eve is com - ing soon, now you dear old man.



Whis - per what you'll bring to me, tell me if you can!

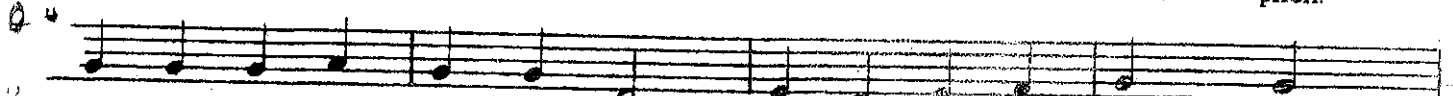
and two lines that are the same in "Jolly Old St. Nicholas."

Reminder: All F's are
sharped in this piece!

Good King Wenceslas



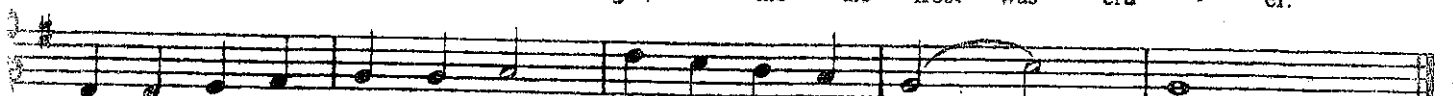
Good King Wen - ces - las looked out, on the feast of Ste - phen.



When the snow lay 'round a - bout, deep and crisp and e - ven.



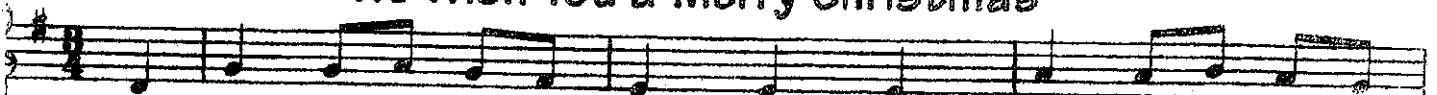
Bright - ly shone the moon that night, tho' the frost was cru - el.



When a poor man came in sight, gath - ring win - ter fu - el.

How many F's are in "Good King Wenceslas"?

We Wish You a Merry Christmas



We wish you a mer - ry Christ - mas, We wish you a mer - ry



Christ - mas, We wish you a mer - ry Christ - mas and a hap - py New Year!

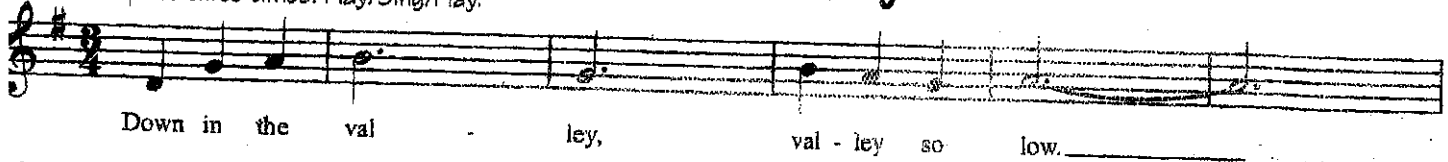


FOLK SONG EXPRESS

Enjoy playing and singing these American folk songs, which use the new note F#.

Down in the Valley

Form this piece three times: Play/Sing/Play.

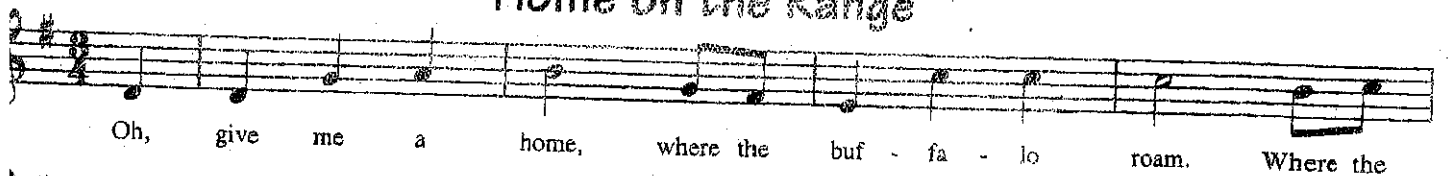


Down in the valley, valley so low.




Hang your head over, hear the wind blow.

Home on the Range



Oh, give me a home, where the buffalo roam. Where the



deer and the antelope play. Where

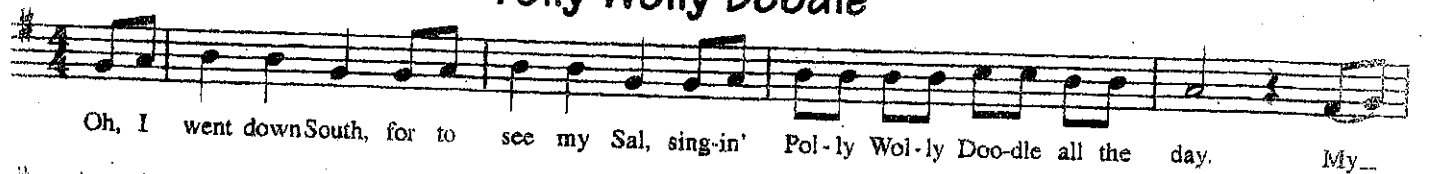


seldom is heard, a discouraging word, and the

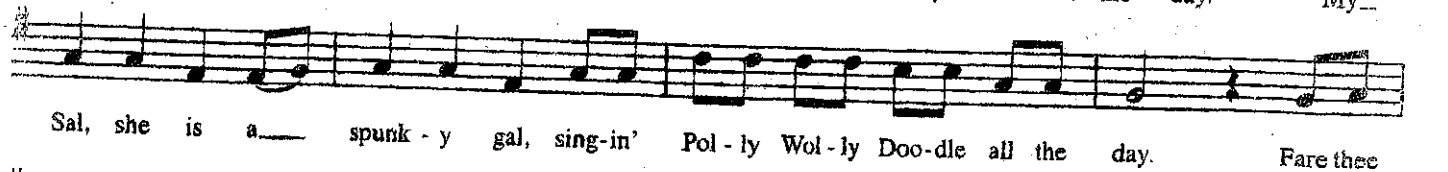


skies are not cloudy all day.

Polly Wolly Doodle



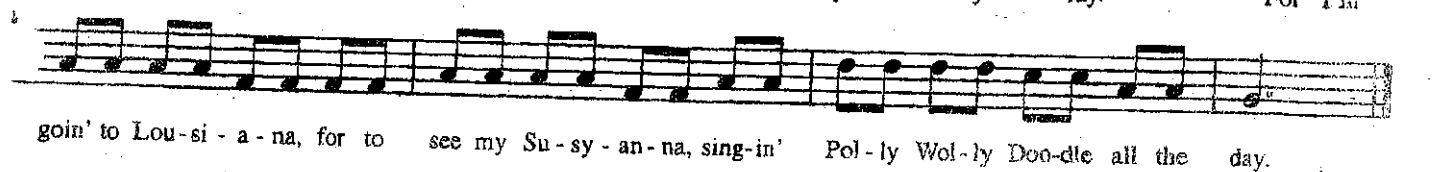
Oh, I went down South, for to see my Sal, sing-in' Pol-ly Wol-ly Doo-dle all the day. My



Sal, she is a spunk-y gal, sing-in' Pol-ly Wol-ly Doo-dle all the day. Fare thee



well, fare thee well, fare thee well, my fair-y fay. For I'm



goin' to Lou-si-a-na, for to see my Su-sy-an-na, sing-in' Pol-ly Wol-ly Doo-dle all the day.